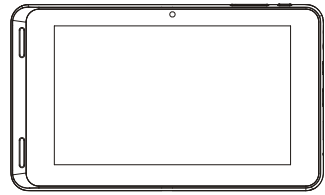
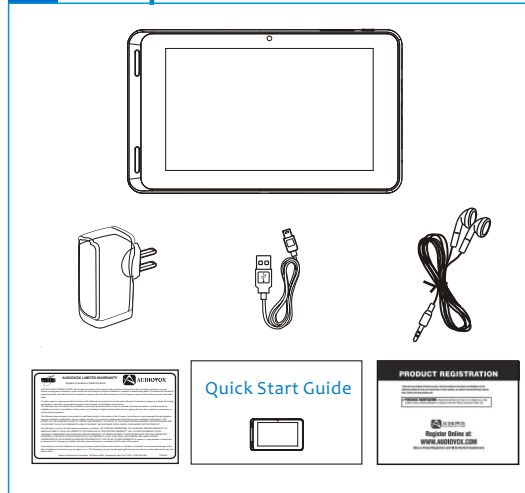


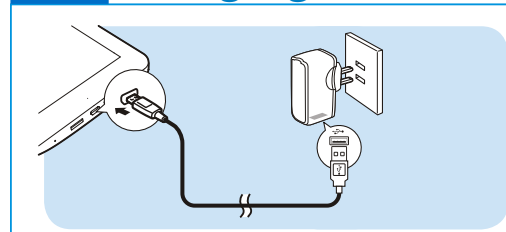
Audiovox T752 7" Tablet for Android™ Quick Start Guide



Unpack



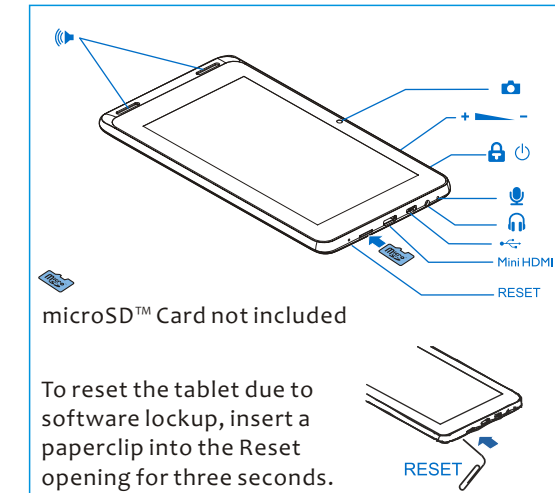
Charging the Tablet



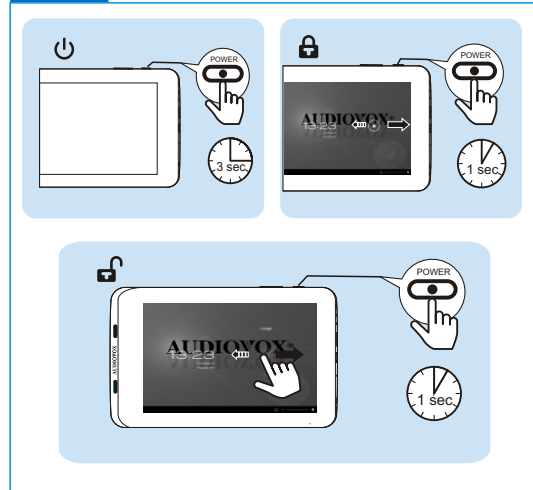
Before using the tablet for the first time, charge the tablet for at least eight hours. Use the supplied power adapter and USB cable as shown.

Note: If the battery is fully discharged, the tablet may not turn on, even when the charger is connected. Charge the tablet for at least thirty minutes before powering on the tablet.

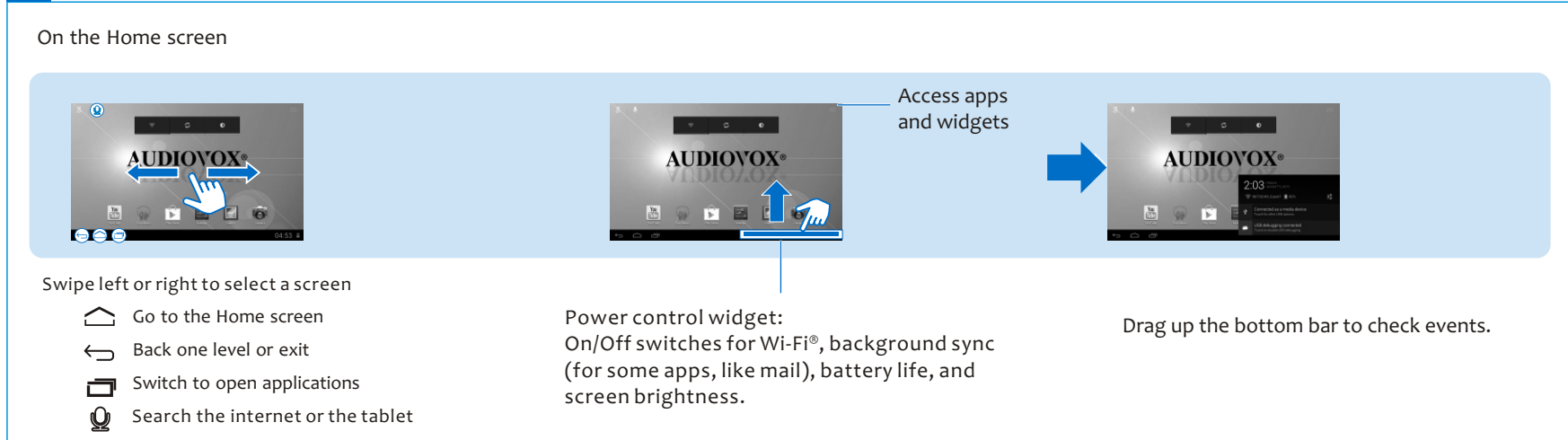
Controls and Features



Power/Lock/Unlock



Navigation



Organize

For quick access, organize icons, shortcuts, and widgets on the Home screen pages.

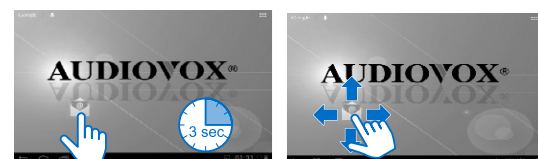
Adding apps to the Home screen



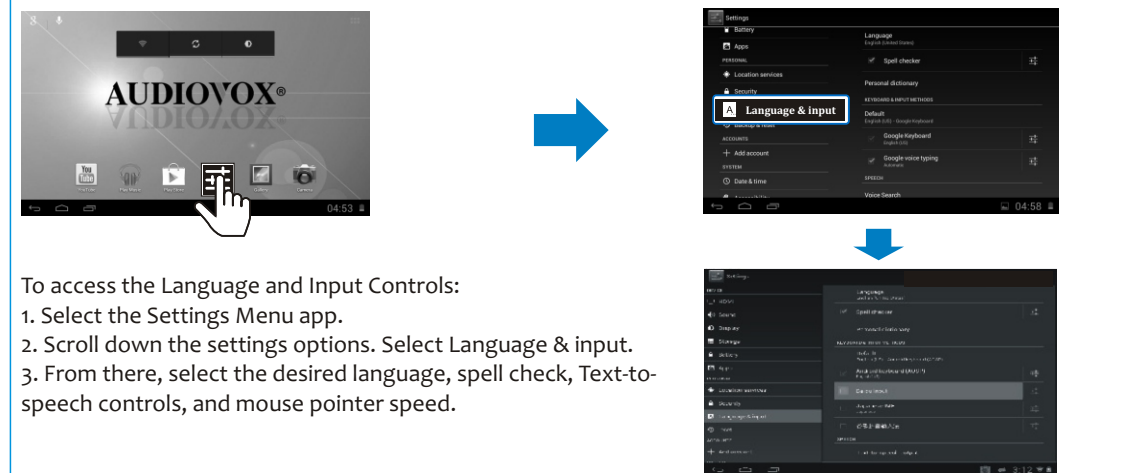
Deleting apps



Moving apps



Language Selection



Connect to Wi-Fi®



To connect the Audiovox T752 Tablet to the internet via Wi-Fi:

1. Access Wi-Fi in the Settings menu.
2. Slide the Wi-Fi switch to ON to view available networks.
3. Select an available Wi-Fi network.

Google™ Account Setup

A Google™ account allows access to all your personal information from any computer or mobile device.

Google Play™: Google Play™ allows access to all your favorites such as movies, books, music, magazines, apps, and more.

Synchronize and back up: Makes your information accessible across all computers and mobile devices.

Access Anywhere: Check all your personal information from any computer or mobile device such as email, calendar, contacts, etc.

Getting Started with the T752 Tablet

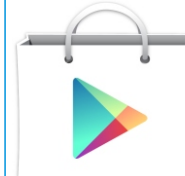


When prompted, sign in using the email address and password created for your Google™ account.

An email address from the following services allows access to Google play:

- > Gmail™
- > Google Apps™
- > Google Plus™
- > YouTube™
- > Adwords™

Google Play™



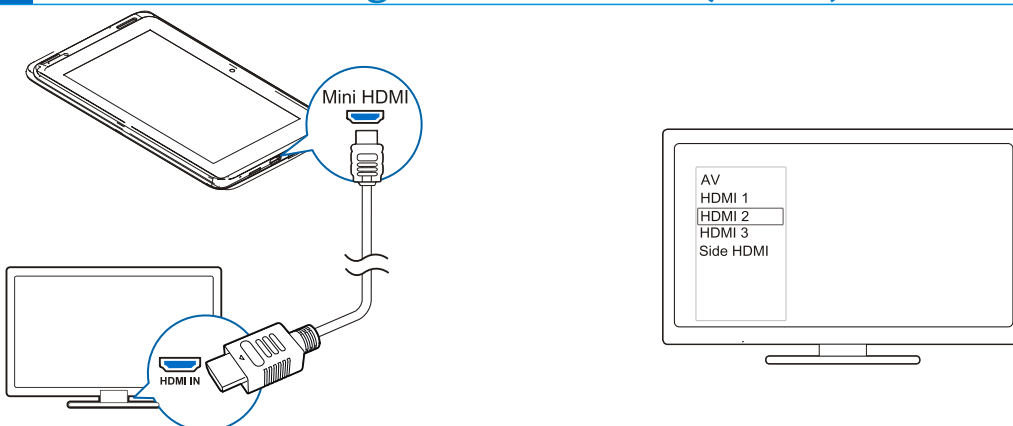
To launch the Google Play Store app, touch the Play Store icon in your Home screen.

Anything purchased on Google Play™ using the T752 Tablet will be available on any of your Android™ devices.

Note: Previous Google Play™ purchases are available on the T752 Tablet as long as the same Google™ account is used.



Connect to a High Definition TV (HDTV)



1. Use an HDMI cable to connect the T752 Tablet to an HDTV.

2. Use the source button on the TV to choose the appropriate HDMI input.

Connect to your PC



Connect the T752 Tablet to a computer with the USB cable to transfer files between the devices. Select Turn On USB Storage and press OK to proceed.

Documentation

To access the English language Audiovox T752 7" Tablet for Android™ User Manual, please visit www.audiovox.com/tablets.

To access the Spanish and French language Audiovox T752 7" Tablet for Android™ Quick Start Guides and User Manuals, please visit www.audiovox.com/tablets.

Android is a trademark of Google Inc. Google, Google Play, Gmail, Google Apps, Google Plus, YouTube, and Adwords are trademarks of Google Inc. Other company and product names mentioned herein may be trademarks of their respective owners.