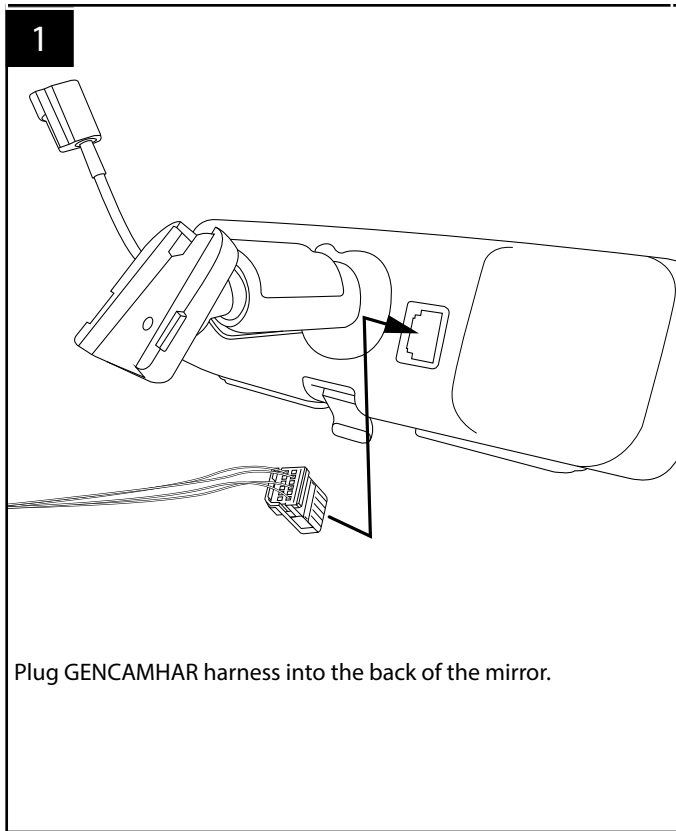
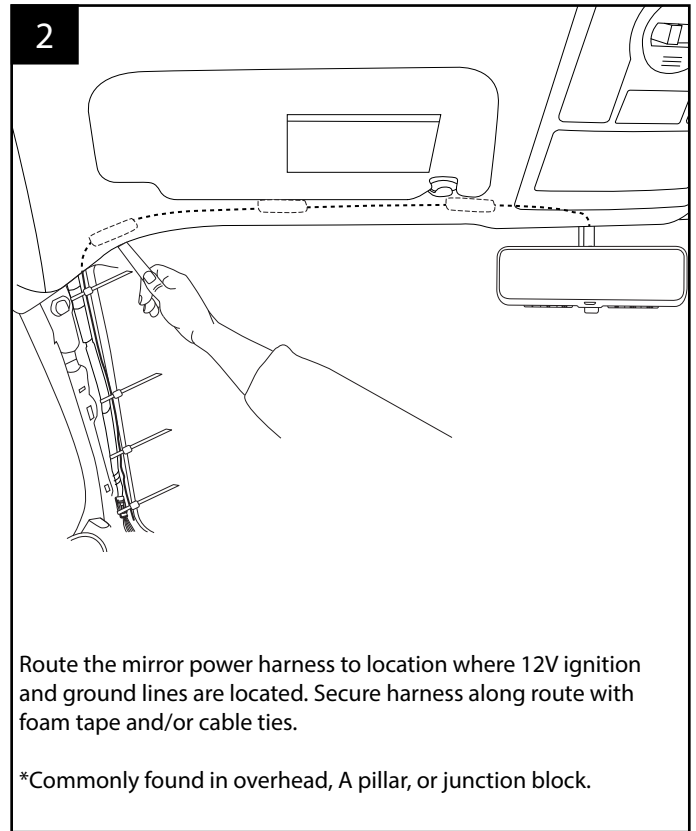


GENCAMHAR Installation Instructions

Note: Backup Camera Sold Separately. Please follow instructions included with camera to complete installation.

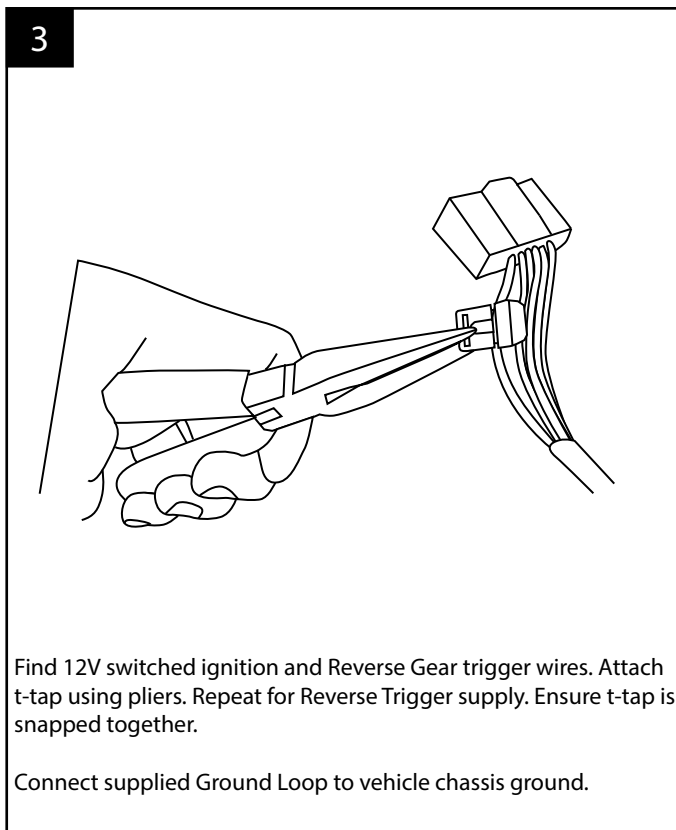


Plug GENCAMHAR harness into the back of the mirror.



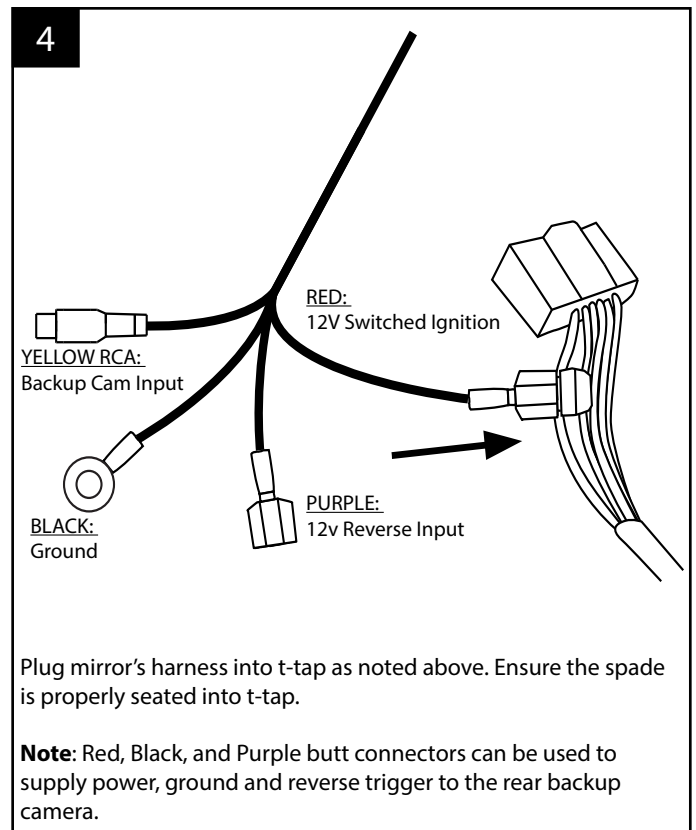
Route the mirror power harness to location where 12V ignition and ground lines are located. Secure harness along route with foam tape and/or cable ties.

*Commonly found in overhead, A pillar, or junction block.



Find 12V switched ignition and Reverse Gear trigger wires. Attach t-tap using pliers. Repeat for Reverse Trigger supply. Ensure t-tap is snapped together.

Connect supplied Ground Loop to vehicle chassis ground.



Plug mirror's harness into t-tap as noted above. Ensure the spade is properly seated into t-tap.

Note: Red, Black, and Purple butt connectors can be used to supply power, ground and reverse trigger to the rear backup camera.