

# ADVENT

## NEXT GEN NAVIGATION CADNAV1

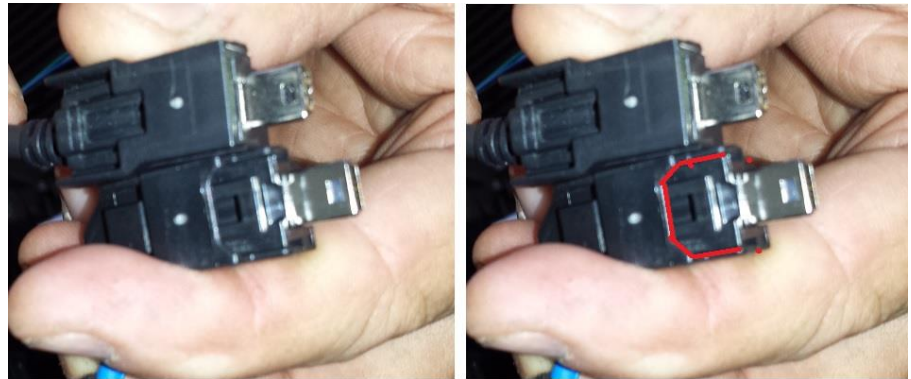
### TECH UPDATE – 2015 GM Video Cable (LVDS)

**Complaint:** The LVDS Cable from the Nav Box will not plug into the monitor.

**Issue:** GM made a slight difference in the Video Cable Connector for 2014.5 and 2015 models.

**Solution:** We will be changing out the cable in future product but a slight modification in the field will correct the situation.

The cable on top is the included cable with The CADNAV1, in the second picture the difference on the new OEM plug is highlighted.



On the included LVDS Video cable you will need to trim the top plastic material with a small set of nippers.

**Remove ONLY the Shown below portion; do not remove the retainer clip inside.**



Questions, concerns, or issues??? Call Tech Support at 1-800-323-4815

For the latest Tech Tips, Install Notes, or other information go to [www.audiovoxuniversity.com](http://www.audiovoxuniversity.com).